



Welcome

Lost Shore Surf Resort is one of Europe's most extraordinary event destinations – a £60 million sport and lifestyle resort set across 60 acres just outside Edinburgh, only 10 minutes from the airport and 25 minutes from the city centre.

Home to **Europe's largest wave pool**, Lost Shore is not only a pioneering surf resort but also a world-class events venue renowned across the UK and Europe. Surrounded by breathtaking natural landscapes, it offers a collection of versatile indoor and outdoor spaces designed to inspire creativity, connection, and impact.

From private meetings and brand activations to large-scale celebrations, every event here is powered by the energy of the waves and supported by cutting-edge facilities, premium accommodation, and exceptional hospitality.

Whether **hosting 8 or 1,000 guests**, our team will craft a seamless, memorable experience from start to finish.





Why Lost Shore?

Scotland's most unique meeting and events destination.

Swap the boardroom for a backdrop that inspires. Lost Shore Surf Resort blends nature, adventure, and connection to create meetings and events that truly make waves.

- **60-acre** sport and lifestyle resort just outside Edinburgh
- **Europe's largest wave pool** and world-class events venue
- Indoor and outdoor spaces for 8 to 1,000 guests
- **On-site accommodation** and premium **dining at Canteen**
- **Team building and wellbeing** activities including surfing, yoga, and sauna
- **10 minutes from Edinburgh Airport** / 25 minutes from the city centre
- **Sustainable by design** – built with efficiency, innovation, and nature in mind
- **Fully accessible** – inclusive facilities designed for all guests
- **Next to the Union Canal and Edinburgh International Climbing Arena** – perfect for outdoor exploration, wellbeing walks, cycling, and group adventure activities.



Surfing

Challenge, connect, and recharge by the waves

At the heart of our 60-acre resort lies **Europe's largest and most advanced wave pool** – a world-first fusion of innovation and nature. Powered by pioneering **Wavegarden®** technology, it creates over **1,000 customisable waves every hour**, perfectly engineered for performance, progression, and pure exhilaration.

Surfing at Lost Shore is more than a sport – it's an immersive experience that channels the energy of the ocean and the proven **wellbeing benefits of blue health**. Time in and around the water restores focus, reduces stress, and inspires connection – making it a **powerful tool for team-building, wellbeing, and brand experiences**.

With expert coaches, **premium Yulex® wetsuits**, and capacity for up to **80 surfers per hour**, every session is designed to deliver an unforgettable shared experience.

We're proud to partner with **The Wave Project** and **Inclusive Surfing Scotland** to ensure surfing at Lost Shore is **accessible to all** – breaking down barriers so everyone can experience the joy and wellbeing of time in the water.





Event Studio

155m² • Capacity up to 120 standing / 90 theatre / 90 long table

Located within The Hub, the Event Studio is a modern, light-filled space overlooking the waves. This versatile venue is ideal for conferences, launches, and creative sessions, combining style, functionality, and impact.

It features a private bar, direct access to an outdoor courtyard for breakout sessions, and panoramic views of the wave pool – creating a dynamic environment that inspires connection and creativity.

Key Features

- Natural Light
- Built-in AV Equipment
- High-Speed Wi-fi
- Private Bar
- Outdoor Courtyard Access
- Overlooking the Wave Pool



Board Room

Capacity: 8 guests

Overlooking the wave pool, the Board Room offers a premium setting for executive meetings, client sessions, and strategy days. This private space features a large boardroom table, integrated screen and conferencing facilities, and high-speed Wi-Fi.

Enhance your meeting experience with relaxed dining in Canteen, our vibrant waterfront restaurant, or pair your meeting with a surf experience for something truly memorable.

Key Features

- Natural Light
- Full AV & Conferencing Facilities
- High-Speed Wi-Fi
- Private Setting with Lagoon Views
- Dining Available in Canteen



The Plaza

Capacity: Up to 1000 guests (standing or festival-style)

The Plaza is Lost Shore's open-air event space – a dynamic outdoor area at the heart of the resort. Open to the public year-round, it can also host brand activations, demo days, product launches, and team-building activities.

With built-in power, flexible layouts, and prime visibility beside the wave pool, The Plaza offers the perfect backdrop for impactful outdoor experiences.

Key Features

- Open-Air Setting
- Built-In Power Supply
- Flexible Layouts
- Vehicle Access
- Branding Opportunities
- Central location beside the Wave Pool



Surf Lab

Capacity: Up to 10 guests

The **Surf Lab** is a purpose-built space for video analysis and high-performance testing, designed for athletes, coaches, and research teams. Created in partnership with **Edinburgh Napier University**, it's the world's first dedicated surfing research facility – advancing performance, product design, and wellbeing through applied research.

Using the controlled environment of the Lost Shore wave pool, the Surf Lab drives innovation in surf therapy, adaptive surfing, and equipment development.

Key Features

- Integrated AV and High-Speed Wi-Fi
- Wet Room
- Flexible Layout for Training or Analysis

Packages

Choose from our carefully curated event packages, or let our team design a bespoke experience crafted around your vision – ensuring every detail at Lost Shore is seamless, memorable, and impactful.

Our packages include everything you need for a world-class experience: exclusive venue hire, tailored catering, full AV support, surf or wellbeing activities, and dedicated event coordination throughout.

Available packages includes:

- Surf & Strategy Away Days
- Day Delegate Rate Packages
- Corporate Retreats
- Private Celebration Package



Food + Drink

Our culinary team celebrates Scotland's finest seasonal produce, crafting fresh, flavourful dishes that capture the energy and spirit of Lost Shore. Whether you're dining in **Canteen**, our vibrant waterfront restaurant, or enjoying bespoke catering as part of your event, every menu is designed to impress.

The atmosphere is relaxed, social, and welcoming – perfect for unwinding after a day by the waves.

Sample Menus Include:

- Delegate Morning & Afternoon Breaks
- Delegate Lunches
- Finger & Hot Fork Buffets
- Sharing & Grazing Boards



Events

Whether you're hosting an intimate business meeting, a high-energy team experience, or a large-scale celebration, Lost Shore Surf Resort offers the perfect blend of creativity, connection, and impact. Our versatile indoor and outdoor spaces can be tailored for everything from corporate retreats and brand activations to private celebrations – all delivered with the warmth of Scottish hospitality and the adventurous spirit that sets Lost Shore apart.

Ideal for:

- Team Building & Corporate Away Days
- Product Launches & Brand Activations
- Conferences & Business Meetings
- Private Celebrations
- Wellness Retreats & Incentive Programmes



Waterfront Dining

Overlooking the waves, **Canteen** is the vibrant heart of Lost Shore – a relaxed restaurant, café, and bar where great food meets unforgettable views.

Our kitchen celebrates Scotland's finest seasonal produce, serving a variety of fresh, flavourful dishes designed for sharing and social dining. From barista coffee and breakfasts to post-surf meals and evening menus, every dish reflects the energy and spirit of the resort.

With log-burning fires, a waterfront terrace, and a year-round line-up of live music and social nights, Canteen offers the perfect setting to unwind, connect, and refuel after a day by the waves.



Resort Activities

Beyond the waves, Lost Shore offers energising and restorative experiences that inspire balance, wellbeing, and adventure. Unwind in the **Spear Sauna**, indulge in bespoke treatments at the **Spa Studio**, or reset with yoga sessions overlooking the lagoon.

For movement and progression, the **Surfskate Academy** delivers dynamic dry-land training, while the **Union Canal** invites you to walk, run, or cycle its scenic route into Edinburgh.

Whether relaxing, recharging, or exploring, every experience at Lost Shore connects you with nature, wellbeing, and the spirit of adventure.







**WE MAKE
WAVES**

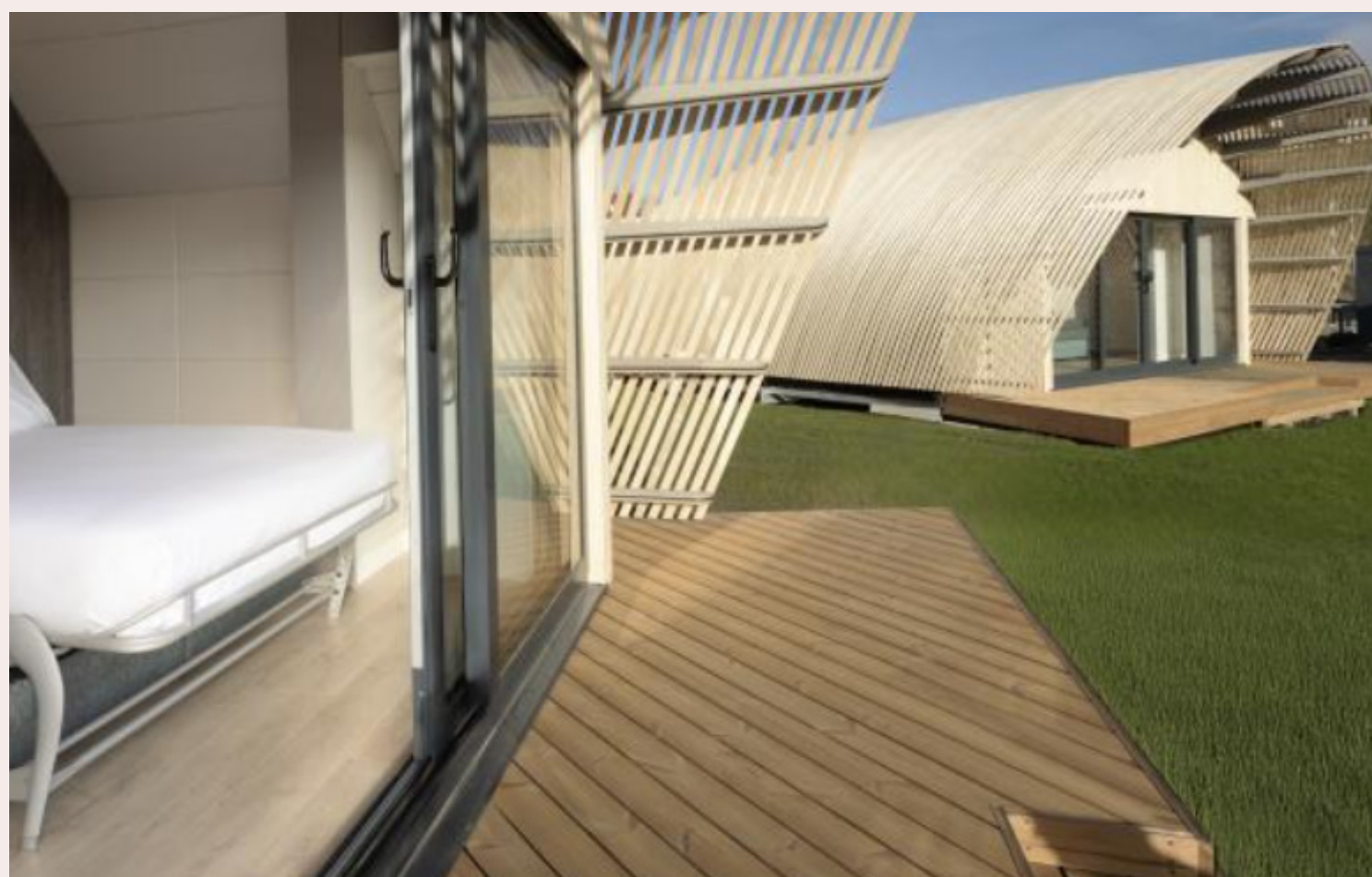
Accommodation

With **53 premium accommodation units**, Lost Shore offers flexible on-site options ideal for multi-day events, corporate retreats, and team getaways – keeping guests close to the action and fully immersed in the experience.

Our self-catered **Hilltop Lodges** overlook the wave pool and surrounding landscape, offering spacious, modern living for **up to 8 guests** – perfect for teams and group stays. For smaller groups or individuals, our **2-person Pods** provide a comfortable, contemporary retreat just moments from the water. The resort also features **6 accessible accommodation units**, ensuring every guest enjoys comfort, convenience, and connection.

Extend your event with on-site accommodation that allows guests to unwind, reset, and make the most of their time at Lost Shore.





Sustainability

From regeneration to innovation.

Lost Shore Surf Resort stands as a symbol of sustainable transformation – turning a **disused quarry** into a world-class, 60-acre sport and lifestyle destination that celebrates nature, community, and innovation.

Built with **energy-efficient design** and powered by **Wavegarden® technology**, our lagoon recycles water and minimises energy use. Across the resort, we champion **local sourcing, low-waste operations**, and use **Yulex® wetsuits** and responsibly made equipment.

Fully accessible by design, Lost Shore **supports local employment, training, and education**, creating opportunities and positive impact for the region.

For meetings and events, Lost Shore combines world-class experiences with a clear commitment to sustainability and positive impact.



Retail

Retail That Tells a Story

Looking for client gifts, goody bag ideas, or a unique setting for a live Q&A or brand activation? Our retail space at Lost Shore offers more than shopping – it's an experience.

Featuring a custom surfboard shaping room, the store brings craftsmanship and creativity to life, offering guests a behind-the-scenes look at surf culture in action. It's the perfect backdrop for intimate brand moments, product showcases, or relaxed networking sessions.

Our carefully curated selection includes premium surf and lifestyle brands, spa and wellness products, and exclusive Lost Shore merchandise, making it easy to find meaningful gifts that capture the spirit of the resort.



What Our Guests Say

"Lost Shore Surf Resort was the perfect home for our Global Surf Therapy Conference. With guests flying in from over 45 countries, we needed a venue that could deliver not only world-class waves but also world-class hospitality – and Lost Shore exceeded every expectation." – **International Surf Therapy Organization**

"We took our AGM to the waves this year at the incredible Lost Shore Surf Resort in Edinburgh – a brilliant backdrop for a day of fresh thinking and team energy" – **Homes Miller**

"We had a different kind of 'board-meeting' at our recent summer team day. Lost Shore Surf Resort in Ratho was the perfect mix of adrenaline, laughs and bonding" – **YourGB**

"Some team-building, plenty of sunshine, and real clarity of where we're going next. We're ready to ride the wave together" – **StormID**

"Partnering with Lost Shore Surf Resort for our Xtratuf product launch was the perfect backdrop to bring our brand to life. The setting offered everything we needed – world-class waves, stunning spaces, and an authentic sense of adventure that perfectly aligned with our brand ethos." – **XTRATUF – Rocky Brands**



Location

Located in Ratho, just outside Edinburgh, we are 10 mins drive from Edinburgh airport and less than 5 miles from Scotland's main motorway systems: M8, M9 and Edinburgh city bypass. We are located between Edinburgh (25 mins drive) and Glasgow (45mins drive).

VENUE ADDRESS

**Lost Shore Surf Resort, 11 South Platt Hill,
Newbridge, EH28 8AY**

By Car/Coach: Parking is available on site. Limited electric car charging also available. 208 car parking spaces. In addition, there are 16 DDA spaces, 5 coach spaces and 9 mini-bus.

Public Transport

By Bus: Jump aboard the Surf Bus and reach Lost Shore Surf Resort from the heart of Edinburgh in just 30 minutes- our all-electric shuttle links the city centre with Europe's biggest wave-pool in style and with sustainability in mind.

By Tram: Catch the Edinburgh tram from central Edinburgh to The Gyle. Walk to the bus stop Gyle Centre (KF) and board the number 70 bus to Halcroft Park. From here, walk 600m along Halcroft Path to Lost Shore. See the number 70 bus timetable [here](#).

By Bike: Cycle along the Union canal and take the stairs up to the EICA. Go past the car park and we're just around the corner. If arriving by E-Bike, we would advise leaving the cycle path at Ratho Marina and following the road to Halcroft Park, to avoid the steep access at EICA from Tow Path.

More information can be found on our website [here](#).





"There are few better places to learn this exhilarating sport."

The Guardian

"Making waves among legions of surf aficionados."

Forbes Magazine



Plan Your Event

Let's create something unforgettable.



From strategy sessions and brand launches to private celebrations and large-scale showcases, Lost Shore Surf Resort blends inspiration, innovation, and impact. Our expert team will guide you from concept to completion, crafting bespoke experiences that make the most of our world-class setting and facilities.

Start planning today
eventsandgroups@lostshore.com
lostshore.com