

# EVENTS + GROUPS



# A WORD FROM OUR FOUNDER

---

Hello, I'm Andy Hadden, founder of Lost Shore Surf Resort.

Following a lifelong love affair with surfing, and coming from Scotland, home to some of the world's best waves, scenery, tourist attractions and a wonderful growing surfing community, I wondered if I could create a plan that would elevate our country's already world leading status as a destination and bring a paradise for surfers of all abilities. A resort that families and friends can enjoy, whether surfing or not, and a place to escape from it all. Somewhere truly inclusive and authentically Scottish.

This is just the start of the journey and we can't wait to welcome you to this very special surf resort!

**Andy Hadden**  
Founder  
Lost Shore











# EVENTS & GROUPS

Lost Shore is Scotland's most exciting new venue to host your next event or group visit. Europe's largest inland Wave Pool celebrates the spirit of surf culture alongside world class facilities and always with a warm Scottish welcome.

Set within a 60-acre site with the jaw-dropping cove as the backdrop, we offer:

- **PRIVATE EVENTS SPACE EQUIPPED WITH FULL AV KIT AND FURNITURE.**
- **CANTEEN, LOST SHORE'S INCREDIBLE WATER FRONT RESTAURANT, BAR & CAFE**
- **ACCOMMODATION FOR UP TO 250 GUESTS ACROSS OUR 53 PODS AND LODGES**
- **WOOD-FIRED SAUNA & WELLNESS TREATMENT AREA**
- **OUTDOOR TERRACE – PERFECT FOR BREAK OUTS, ACTIVATIONS AND CATERING OPTIONS**
- **AND OF COURSE, A WORLD-CLASS SURFING EXPERIENCE SUITABLE FOR ALL ABILITIES**

Whether you want to get in the water or just embrace the Lost Shore experience, we've got you covered. Conveniently located just 25 minutes from Edinburgh City Centre and 10 minutes from Edinburgh Airport, our site is fully accessible.









# OUR IMPACT - SUSTAINABILITY

Being the biggest wave pool in Europe is not only a remarkable achievement, it also brings a high degree of responsibility to make it work as inclusively and sustainably as we possibly can.

Since its inception, Lost Shore Surf Resort has held both of these values as key guiding principles. Surfing has traditionally been a sport which has had many barriers to participation, both physical and perceived. Lost Shore are committed to identifying those barriers and removing them wherever possible through considered design of our site and lessons.

Furthermore, we continue to collaborate with Dr Jamie Marshall, our Social and Health Innovation Lead, who has developed wellbeing packages for corporate groups and schools that take an evidence-based approach to looking after personal wellbeing and resilience. The integration of these learnings holistically across Lost Shore underlines our aim for everyone who visits us to leave feeling better than when they arrived!

When it comes to sustainability all of the electricity we use is produced from renewable sources. Whilst partnering with Wavegarden as our technology provider means that we can operate our Cove in a much more sustainable way. The Wavegarden Cove is the most energy-efficient technology in the sector – using 10 times less energy than the pneumatic systems used by most other surf park developers and consumes less energy than a single chair lift at a ski resort. Further details of our green credentials can be found on our website.



# EVENTS STUDIO

Our 'Event Studio' is a unique and dedicated space specifically designed for events, featuring built-in AV equipment, audio systems, and high-speed Wi-Fi. With ample natural daylight and floor-to-ceiling windows, offering unrivalled views overlooking the wave pool, it provides an ideal setting for a variety of functions, including brand activations, product launches, photo and film shoots, milestone celebrations, team away days, receptions and meetings.

Additionally, our Event Studio offers private access to an outdoor courtyard, perfect for breakout sessions, outdoor activities, and catering options in a refreshing outdoor setting.

It also features its own dedicated bar, making it perfect for evening celebrations, receptions, and offering open bar or card bar options.

The space can accommodate up to 120 standing capacity – subject to your final event set up.

- **FULL IN-HOUSE AV KIT – PA, MICS, PROJECTOR & SCREEN**
- **ACCESS TO ADJOINING PRIVATE COURTYARD OVERLOOKING THE COVE**
- **HIGH-SPEED WI-FI**
- **PRIVATE TOILETS**





# ROOM LAYOUT

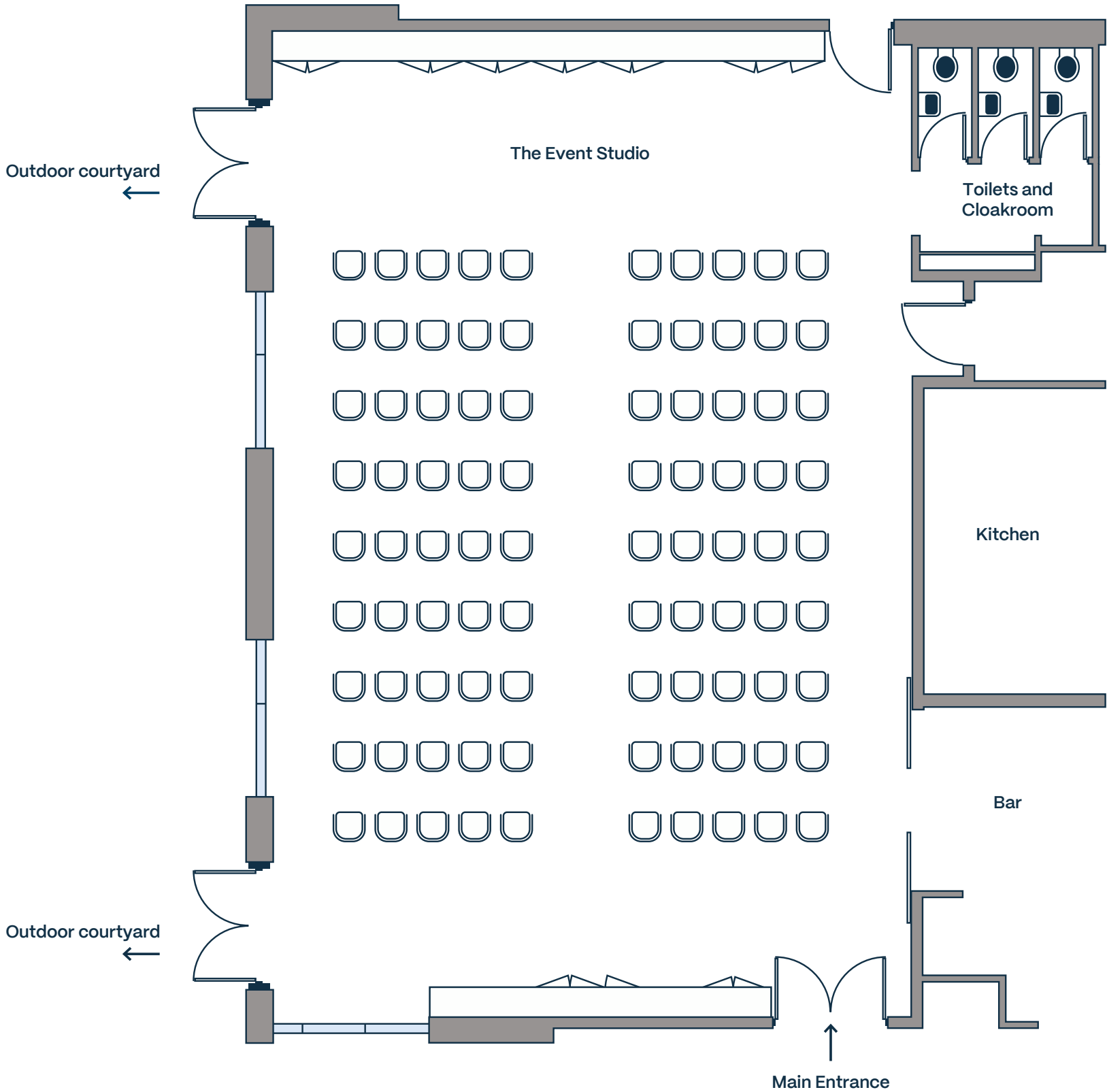
## CAPACITIES

SIZE - 152.8 SQM  
CAPACITY - 120 STANDING | 90 SEATED

MEETING CAPACITY WITH A BUFFET CATERING  
STATION SET UP WITHIN THE ROOM

THEATRE STYLE	72
ROUND TABLE	50
CABARET	25
BOARDROOM	30
LONG TABLE	60
CLASSROOM	36
U SHAPE	21

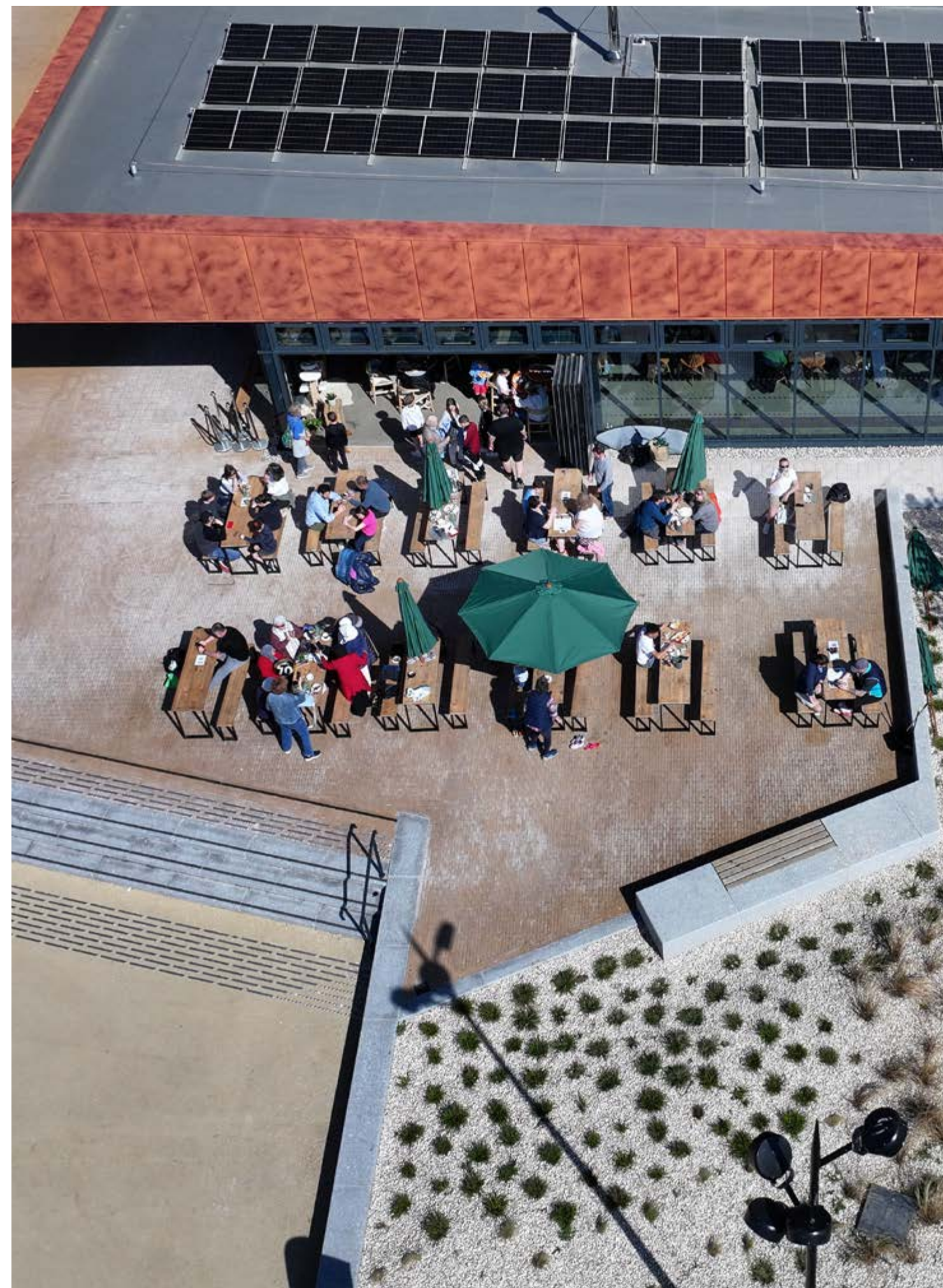
capacities are a guide and subject to final  
event set up.





# OUTDOOR SPACE

We also have a range of outdoor areas including a courtyard adjoining the Event Studio suitable for events, pop-ups and activations. Overlooking the cove, look no further if you're looking for a talking point for your guests or a unique backdrop.







EXCLUSIVE HIRE

EXCLUSIVE HIRE

## EXCLUSIVE HIRE

For a truly unique event experience, consider a full-site takeover.

Our exclusive hire option allows you to host a show-stopping event that highlights innovation, luxury, world-class amenities, and picturesque surroundings. If you are interested in a full venue takeover, our dedicated sales and events team is here to assist you every step of the way. We are committed to ensuring that your event is a world-class experience that captures attention.

Contact us to discuss this exciting opportunity and let us help you create an event that leaves a lasting impression on your guests.







# EVENTS PACKAGES

Lost Shore has a range of event packages available including:

- **EVENING RECEPTION**
- **MILESTONE CELEBRATIONS**
- **MEETINGS**
- **CORPORATE RETREATS**
- **CORPORATE WELLBEING**

If you have something more bespoke, we'd be delighted to help bring your perfect event to life.

Contact us for more information on our packages and pricing.





# EVENT ENHANCEMENTS

Whilst surfing is at our core, we offer a range of additional onsite activities from surf skating, an onsite sauna, wellness treatments, yoga, retail and accommodation. Furthermore, our neighbours are the Edinburgh International Climbing Arena, one of Europe's largest and most impressive indoor climbing arenas - visitors looking to continue the adrenalin sport should look no further.



# SURF

Lost Shore boasts Europe's largest inland surf cove. With world class waves coupled with passionate and knowledgeable coaches, including Scottish national champions, you couldn't be in better hands. Whether you are a complete beginner or a seasoned pro, Lost Shore offers an incredible surfing experience tailored for you.

Surfing isn't mandatory as part of your event here at Lost Shore, but we'd love to share the thrill of catching your first wave with you. All surf sessions & lessons include board and wetsuit hire. Our heated changing rooms and hot showers ensure a pleasant experience both in and out of the water.

Surf sessions/lessons take place 7-days per week, hourly with up to 72 surfers in the water at any one time. Lessons include a 30-minute onland lesson to help you feel confident and safe before your coaches take you into the water for 1 hour. Your coach will stay in the water with you in groups of no more than 8 per coach. Different wave settings allow us to cater for surfers of all experience levels throughout the day.

Lost Shore is fully accessible and our partnership with Wave Project ensures we are continuing to make our site and surf experience more inclusive and accessible all the time. Come and experience what Lost Shore is all about first hand!







# SURFSKATE ACADEMY

You don't have to get in the water to get involved! SurfSkating is an increasingly popular variation of skateboarding which replicates the experience of surfing a wave in the ocean but on dry land. By arrangement with our partners SurfSkate Academy groups of up to 15 can enjoy a one-hour session of this fantastic surf training activity either on the plaza or in the Event Studio.



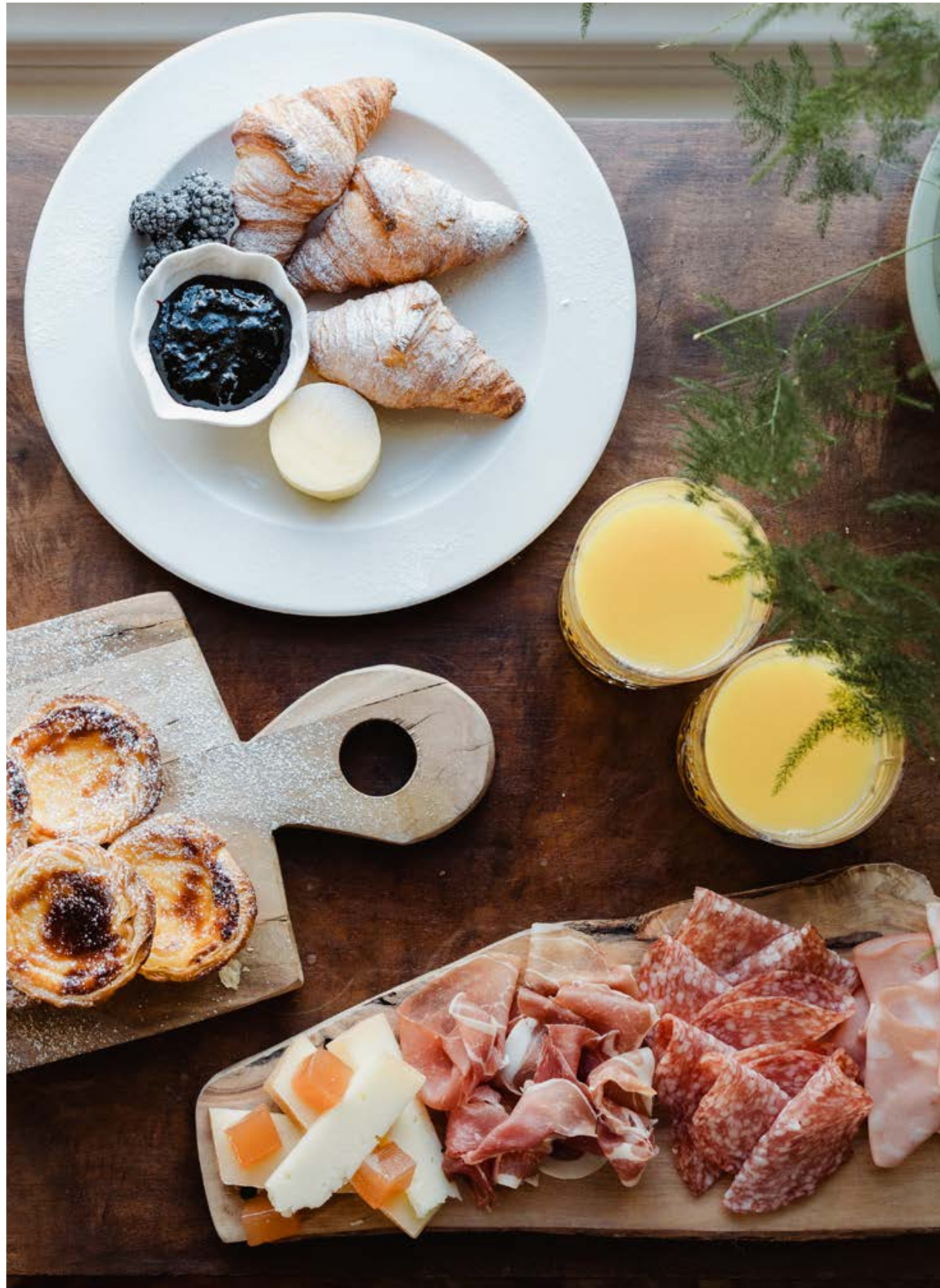
# WELLNESS & SAUNA

At our wellness centre at the resort, we've teamed up with Michelle Denham, a celebrated wellness professional, to offer you a range of unique treatments. Think soothing massages that melt your stress away and revitalizing facials that energise and refresh.

Meanwhile your group can enjoy our wood fired sauna experience overlooking the waves brought to you by Spear Sauna. Perfect post surf - up to 18 people can be accommodated.







## FOOD & DRINK OFFERINGS

Canteen is Lost Shore's restaurant, bar & café. A laidback space with views across the cove featuring guest kitchen residents and celebrating Scotland's best independent producers across its bar and café where you can book a table or private area for up to 16 guests.

The Event Studio, with a capacity of up to 120, offers a range of menus and bespoke approaches to ensure we can tailor food choices to best suit your event style and guest preferences.

From long table dinners through to canape receptions or more relaxed service styles with pizza trucks or BBQs on the terrace we'll work with you to create your perfect menu. If you're hosting a meeting our local suppliers include Machina Coffee and Company Bakery. All of our menus cater to all dietary requirements.

Our bar continues our commitment to local produce and our menus span hand-crafted cocktails, beers, wines and a fantastic range of low and non-alcoholic choices.









# ACCOMMODATION

With various types of accommodation options to choose, our unique accommodation offerings feature luxurious amenities, complimentary Wi-Fi, a peaceful setting and kitchen facilities.

Whether it's a night in a cosy Waterfront Pod sleeping up to 2 guests, or a luxury Hilltop Lodge sleeping up to 8 guests, they provide the perfect base to kick back, relax and immerse yourself in Lost Shore Surf Resort.

Our Waterfront Lodges (Kurvs and Waves) and Waterfront Pods are conveniently located next door to the 'Event Studio' and Canteen, where as 3-4 bedroom Hilltop Lodges are located above the Resort, with many having spectacular views overlooking the Wave Pool and Forth Road Bridges.

We have 53 accommodation units in total, ranging from hilltop lodges to waterfront pods, sleeping up to 250 guests across the Resort. Ideal for company away days, corporate retreats, brand activations or exclusive hires.



# RETAIL

Lost Shore's Surf Shop is stocked with the very best surfing equipment and apparel. We also have our own range of merchandise. If you want to include gifting as part of your event, we have a range of products available to help make your event even more memorable to your guests.

Our retail activation is also the perfect back drop for brands looking to host product launches and live Q&As in a unique setting as part of your event – speak to our events and sales team for more information about this opportunity.





# LOCATION

Located in Ratho, we are 10 mins drive from Edinburgh airport and less than 5 miles from Scotland's main motorway systems: M8, M9 and Edinburgh city bypass. We are located between Edinburgh (25 mins drive) and Glasgow (45mins drive).

## VENUE ADDRESS

Lost Shore Surf Resort, 11 South Platt Hill,  
Newbridge, EH28 8AY

Parking is available on site. Limited electric car charging also available. 208 car parking spaces. In addition, there are 16 DDA spaces, 5 coach spaces and 9 mini-bus spaces.

For public transport links please see our Getting Here page on the website.

We are delighted to offer preferential transport rates to our customers through third party providers when you book direct. Please let us know if this is of interest to you and we'll be happy to provide further information.

Please contact - [eventsandgroups@lostshore.com](mailto:eventsandgroups@lostshore.com)





# LAST WORD

---

If you have any questions or would like to discuss your event at Lost Shore we'd love to hear from you.

Please don't hesitate in dropping us an email to

**[eventsandgroups@lostshore.com](mailto:eventsandgroups@lostshore.com)**

We hope to welcome you to Lost Shore soon.



